

HUBBELL CONTROL SOLUTIONS PRODUCT PORTFOLIO



HUBBELL[®]
Control Solutions



HUBBELL
Lighting



Hubbell Control Solutions' advanced systems and lighting controls offer a comprehensive portfolio of simple, scalable and seamless solutions for indoor and outdoor applications from a single partner. Our advanced lighting control technologies provide intuitive and flexible deployment options to meet code, enhance comfort, increase energy savings and improve operating efficiency for enterprises of any size. Hubbell Control Solutions' product suite includes distributed and centralized, wired and wireless systems, luminaire integrated sensors, color tuning controls, panels, occupancy sensors, photocell sensors, and emergency relays.

Platform Selection Guide

Hubbell Control Solutions' four platforms provide the flexibility to meet the application needs, code compliance and budget requirements for any project.

	Attributes	NX Distributed Intelligence™	PowerHUBB™ PoE Lighting & Control	wiSCAPE™ Lighting Control	SiteSync Lighting Control
Platform Elements	Architecture	Distributed	Centralized	Distributed	Distributed
	Deployment	Standalone / Network	Network	Network	Network
	Application Space	Interior / Exterior	Interior	Exterior	Exterior
	Wired Connectivity	•	•		
	Wireless Connectivity	•		•	•
Control Tiers	On-Fixture Controls (Exterior Only)	•		•	•
	In-Fixture Controls	•	•	•	•
	Room Controllers	•			
	Networked Building Controls	•	•		
Platform Features	Basic Code Compliance	•	•	•	•
	Occupancy Sensing	•	•	•	•
	Daylight Harvesting	•	•	•	•*
	Zone Control	•	•	•	•
	Scheduling	•	•	•	•
	0-10V Dimming	•	•	•	•
	SpectraSync™ Color Tuning	•			
	3rd party Integration (A/V, Shade, HVAC)	•	•		
	BMS Integration (BACnet™)	•	•	•	
	Application Programming Interface (API)		•		
	Analytics		•	•	
Enterprise Services		•	•		
User Interfaces	Mobile Application (Commissioning)	•		•	
	Software User Interface	•	•	•	•

*Only supported with On-Fixture Control Module and with select parking garage luminaires

Intelligent Lighting for Connected Buildings and Spaces

Hubbell Control Solutions' NX Distributed Intelligence™ platform delivers a seamless lighting control solution for both indoor and outdoor spaces. NX is capable of scaling from standalone fixture and room control applications to networked building deployments. NX operates using wired, wireless and hybrid connectivity with native BACnet™ support.



Truly Intelligent

The Hubbell Control Solutions' NX Distributed Intelligence lighting control platform is the first of its kind to utilize a distributed network architecture (DNA) which provides users with unmatched system reliability, scalability and simplicity.



Simple and Intuitive

NX provides occupants with nearly unlimited lighting control possibilities and is designed to self-configure, automatically meeting energy code requirements as devices are connected.



Scalable

NX is designed for buildings, rooms and luminaire-based applications with a comprehensive portfolio of panel, room-based and in-fixture controllers, sensors and human interfaces as well as support for Building Automation Systems.

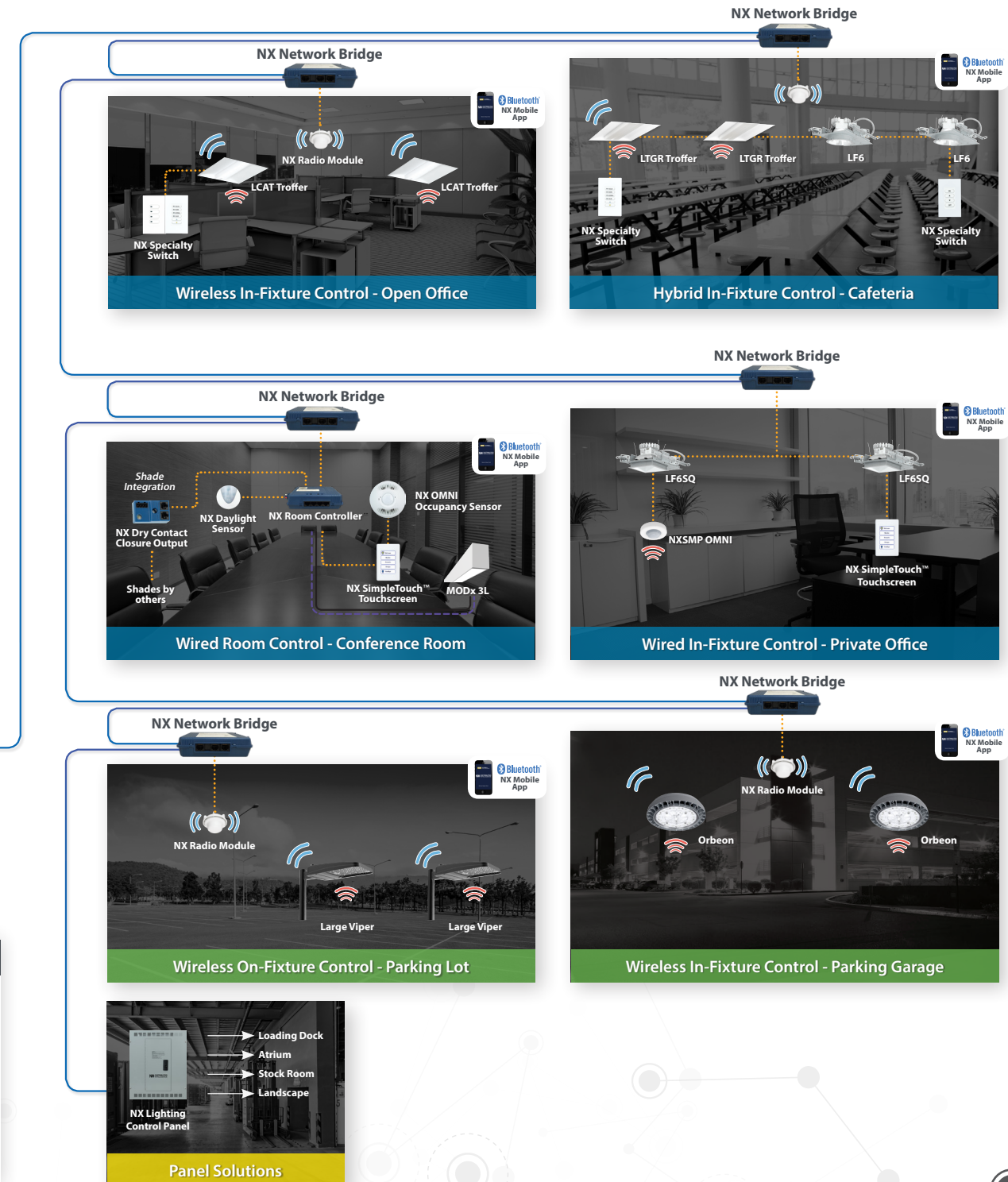
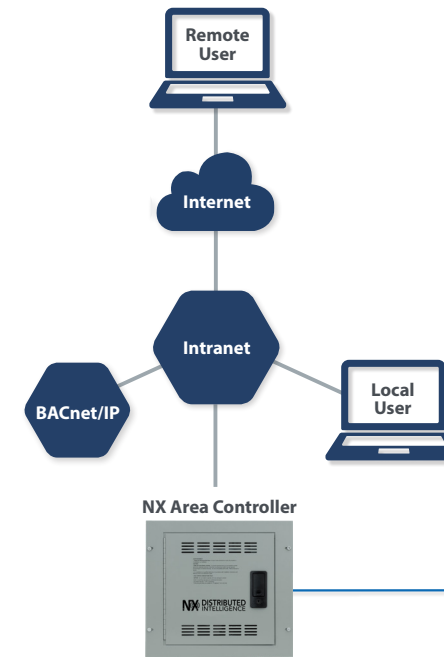


Versatile

NX supports indoor and outdoor applications, wired, wireless and hybrid networked lighting control deployments, and enables emerging applications such as Hubbell Lighting's SpectraSync™ Color Tuning Technology.



A Single Platform with Boundless Application Solutions



Platform Snapshot					
Space Type	Architecture	Deployment	Connectivity	Integration Options	Advance Services
Interior and Exterior	Distributed	Standalone and Network	Wired, Wireless, Hybrid	Contacts, BACnet™	SpectraSync™

Diagram Key

HubbNET™ Wireless	Ethernet	Commercial Office
Passive Infrared and Daylight Sensor	HubbNET™ Powered Ethernet	Ancillary Spaces
Line-Voltage Wiring	Smart PORT Communication	Parking Lot
	0-10V Wiring	

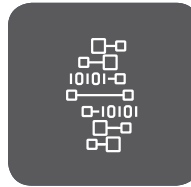
For additional solutions possible with NX please visit www.hubbellcontrolsolutions.com to view our Vertical Market Application Guides.

One Company, One Platform, Limitless Possibilities

Hubbell Control Solutions' PowerHUBB™ platform provides building owners and lighting practitioners with a fully integrated, end-to-end, PoE network leveraging the Internet of Things (IoT) to future-proof buildings through a highly scalable, digital ceiling platform. PowerHUBB's enterprise technology provides a clear path for cost-effective smart building deployments, delivering the best ROI in the industry.

POWERHUBB™
PoE LIGHTING & CONTROL

Connect.
Illuminate.
Control.
Empower.



Actionable Intelligence

PowerHUBB software can scale from basic lighting control to advanced cloud based analytics. The analytics provide building automation integration and IoT application development to deliver smart building solutions that help improve decision making, and the bottom line.



Code Compliance Made Easy

PowerHUBB delivers a system designed to meet the latest requirements of ASHRAE, IECC and Title 24 energy codes. Utilizing its robust software tools and embedded device intelligence, PowerHUBB provides a simple and customizable means to meet project requirements while delivering additional energy savings.



Simple and Flexible Deployment

A Power over Ethernet installation reduces material and labor cost by using a single Cat5e/6 connection for power and communication. This plug-and-play, low-voltage cabling approach greatly simplifies the installation process, saving time, minimizing safety risk and helps to alleviate resourcing constraints for skilled labor.



Enhanced Energy Savings

Greater energy savings can be realized by implementing PowerHUBB's advanced energy management tools, automation access and open Application Programming Interface (API) to drive scalable and aggressive control strategies across the building environment. Further reduction in energy consumption can be gained by using dashboards to visualize trends and measurements for optimizations and improved efficiencies.

Platform Snapshot					
Space Type	Architecture	Deployment	Connectivity	Integration Options	Advance Services
Interior	Centralized	Network	Wired	BACnet, Enterprise	API, Analytics

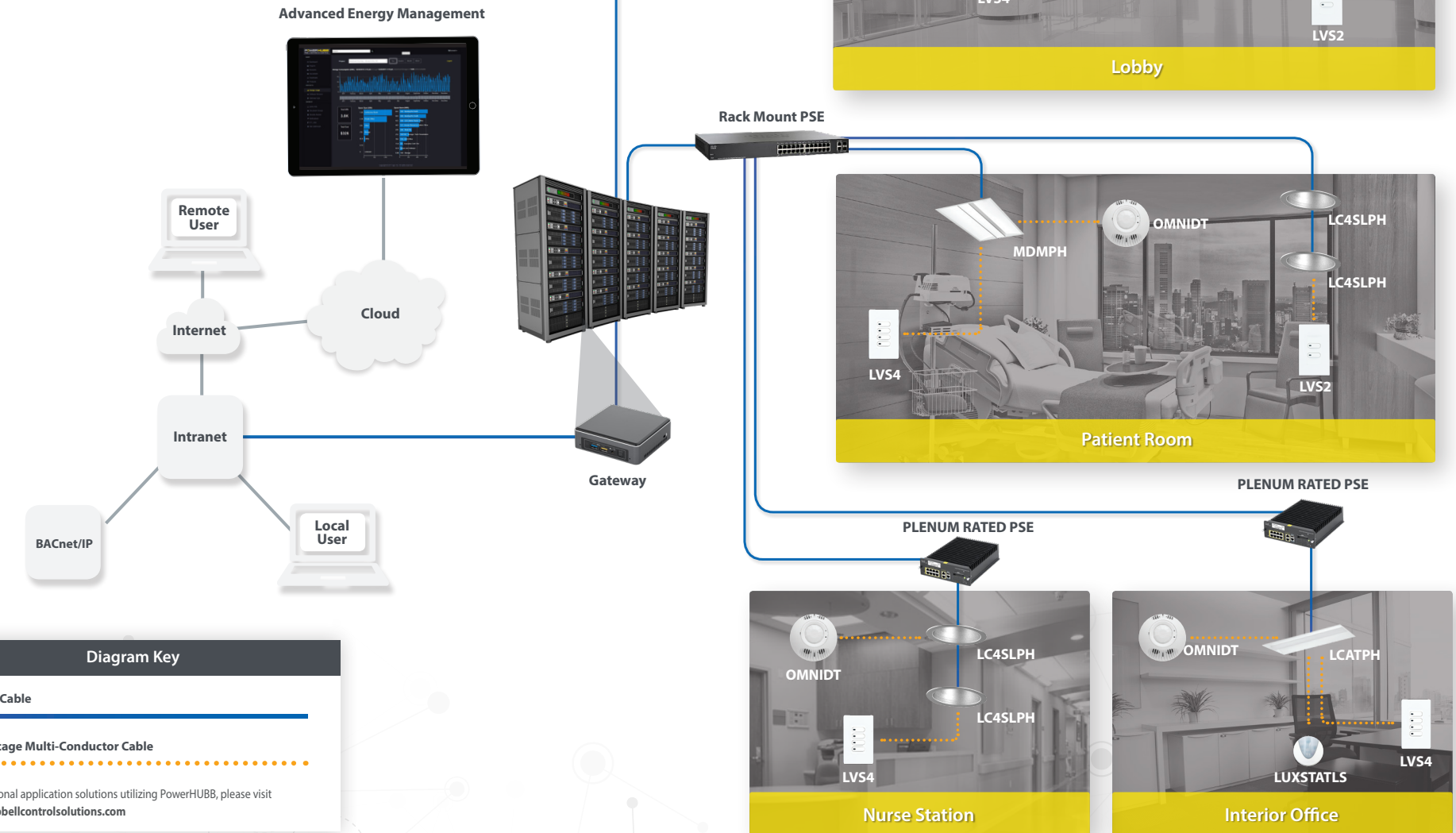


Diagram Key

Cat5e/6 Cable
—

Low Voltage Multi-Conductor Cable
- - -

For additional application solutions utilizing PowerHUBB, please visit www.hubbellcontrolsolutions.com

Delivers Peace of Mind and a Better Bottom Line

Hubbell Control Solutions' wiSCAPE™ outdoor lighting management system delivers wireless control solutions to maximize energy savings and enhance safety for parking lots to campuses and cities. With a fully integrated, end-to-end platform and robust software suite to manage, monitor and measure lighting assets, wiSCAPE provides an immediate path to improved operational efficiencies.



Unparalleled Scalability and Flexibility

wiSCAPE provides the ability to monitor, manage, and meter a limitless number of lighting assets to deliver optimized deployment solutions that can be adjusted without impact to infrastructure.



Versatile Operation with Peace of Mind

wiSCAPE's intuitive enterprise software suite offers real-time asset management to advance customizable map views and dashboards to help improve operational efficiencies. This is accomplished over a highly secure network using the latest in advanced security measures and encryption to ensure data is handled safely.



Open Connectivity

Compliant with open standardized network technologies and industry protocols, wiSCAPE's connected devices integrate seamlessly and reliably with 3rd party systems to deliver additional application solutions.



Invaluable Insights

Data insights generated by wiSCAPE's advanced energy management tools, utility-grade metering, 24/7 diagnostic reporting, and/or configurable alert notifications, can be used to implement control strategies and preventive measures that improve the bottom line.

wiSCAPE™

Take Control of the Outdoors and Enhance Safety and Improve Operational Efficiencies



Platform Snapshot					
Space Type	Architecture	Deployment	Connectivity	Integration Options	Advance Services
Exterior	Distributed	Network	Wireless	BACnet™, Enterprise	API, Analytics

Simple, Reliable, Affordable

SiteSync Lighting Control delivers flexible control strategies for reducing power consumption and minimizing maintenance costs while delivering the right light levels with a simple and affordable wireless solution. With SiteSync Lighting Control's pre-programmed approach, installation becomes a quick and easy process, greatly reducing the complexity, time, and cost compared to typical field commissioning.



Embedded Intelligence

- Semi-autonomous design allows for independent operation
- Local flash memory for data retention
- On-board real time clock
- Backup solid state battery for date and time retention
- Built-in 2.4 GHz radio (16 channels)



Installation Simplicity

- Factory pre-commissioning removes complexity and reduces time and cost
- Luminaires are tagged for quick and easy identification and installation
- Simply set date and time to complete install process
- Modify schedules in the field at any time using software



Design Flexibility

- User defined dimming schedules, for each day of week and up to 24 special dates
- Supports multiple complex dimming schedules using real or astronomical time
- Motion detection support using master and satellite grouping
- Lumen maintenance compensation
- Automatic adjustment for Daylight Savings Time

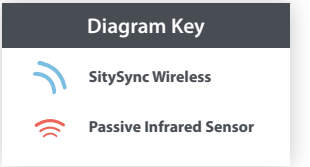
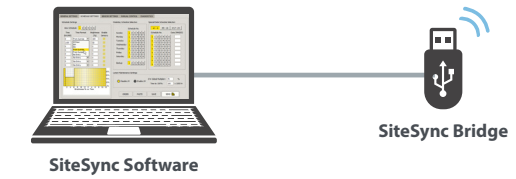


System Capabilities

- Distributed Intelligence - removes need for web access, central controller or gateway
- Semi-autonomous wireless mesh network provides peace of mind with cyber-safe and reliable architecture
- No recurring fees for service, support or licenses
- Offers advanced security options for encryption and channel selection

Platform Snapshot					
Space Type	Architecture	Deployment	Connectivity	Integration Options	Advance Services
Exterior	Distributed	Network	Wireless	N/A	N/A

Connected Lighting Made Easy



1



Specify

Specify with Design Flexibility

- Provide Hubbell Lighting with completed pre-commissioning worksheet

2



Install

Simply Install, Set Date and Time

- Luminaires are shipped pre-commissioned from the factory
- Each luminaire arrives on site with an identification label; install in the appropriate location
- Use SiteSync software to broadcast current date and time

3



Save

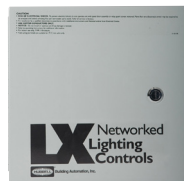
Enjoy the Immediate Benefits of SiteSync

- Once installation is complete, SiteSync Lighting Control starts working to:
 - Deliver significant energy savings
 - Maximize the life of lighting assets
 - Decrease maintenance related costs
 - Create a safer environment

Lighting Control Panels

LX Lighting Control Panel System

Take control of an entire building's lighting with the LX™ Networked Lighting Control System. The LX series is a network of expandable and modular relay panels, sensors, and switches, connected by a simple, two-wire communication network. Expandable from a single floor to an entire building, the LX series includes an intuitive programming interface, touch-screen tablet, and remote access via LAN and Internet.



Key Features:

- Unique hand-held touchscreen GUI
- Robust and reliable 20Amp mechanically-latching relays
- Multiple size enclosures available (4, 8, 16, 32, and 48 relays)
- Powered, topology-free, polarity-insensitive, two-wire communication
- LonMark® Certified
- Seamless integration with major building protocols, such as LON, BACnet™ and MODBUS®

CX Commercial Lighting Control Panels

The CX Panel has a diverse set of programming capabilities allowing for manual or scheduled switching and dimming from 4 to 24 lighting loads. Designed to be a low-cost alternative to high cost lighting control systems, while offering more options than a time clock and contactors, the CX Panel offers maximum flexibility to a wide range of small to medium commercial projects such as gas stations, convenience stores, retail stores and schools.



Key Features:

- 4 Relay Panel sizes: 4, 8, 16 and 24
- Four types of relays – 20A/1P (NO), 20A/2P (NO and NC) (14K SCCR) and 30A/1P latching (18K, SCCR)
- Optional dimming control of 0-10V drivers and dimmable ballasts
- LCD user interface with keypad
- Programmable inputs accept low voltage switches, photocells, or motion sensors
- Program uploads via removable SD card



Sensors and Relays

Hubbell Control Solutions (HCS) offers one of the industry's broadest selections of Occupancy/Vacancy Sensors. Utilizing the embedded IntelliDAPT™ technology, HCS Sensors analyze the controlled area to make automatic adjustments in both sensitivity and timing settings for optimal performance, energy savings and maintenance-free operation.



WASP™2 | Occupancy Sensors for High/Low Mount and Outdoor Use

- Passive Infrared (PIR) technology for superior motion detection
- Built-in photo sensor for automatic daylight harvesting



LightHAWK®2 | Intelligent Occupancy/Vacancy Wall Switch Sensors

- Ultrasonic (US) and PIR technologies for unequaled motion detection
- Manual-ON (Vacancy Sensor) or Automatic-ON (Occupancy Sensor)



LightOWL® | Intelligent Occupancy/Vacancy Wall Mount Sensors

- US and PIR technologies for unequaled motion detection
- 1,600 square-foot coverage area per sensor (depending on model)



OMNI® | Intelligent Occupancy/Vacancy Ceiling Mount Sensors

- US and PIR technologies for unequaled motion detection
- 500-2,000 square-foot coverage area per sensor (depending on model)



Daylight Harvesting Controls

- Open and Close loop photo sensors available
- Indoor and Outdoor options
- Photo sensors for stand-alone and network solutions utilizing HCS controls



Emergency Relays

- UL924 applications for shunt or bypass
- UL1008 applications for local transfer
- Includes 0-10V dimming applications



Technical Service & Support

Our Experience

Hubbell Control Solutions offers customers a wide variety of services, a wealth of field experience and the highest quality products. We are committed to the same level of quality when providing services including layouts, training and system start-ups to our customers.

Solutions

From the first contact through the final system adjustment, Hubbell Control Solutions Technical Sales and Service personnel adhere to the highest level of professionalism and responsiveness. Because we value our customers so highly, we ensure that they receive full corporate support throughout every phase of a sale. Our service organization offers the convenience of a variety of services: on-site troubleshooting, maintenance contracts for periodic system checks, on-site start up and check out to maximize system performance.

Service & Support capabilities:

- Sensor Layout and Tuning
- Onsite Startup
- Telephone Startup
- Onsite Performance-Verification Walkthrough
- Customer-Site Solution Training
- Onsite Support
- Remote Diagnostics
- Onsite Programming

Phone and Online Support

While it is our goal to provide you with intelligent, simple and scalable control solutions, customer experience level and project complexity may necessitate additional support during the design development, construction and post-occupancy stages of a project.

The Hubbell Control Solutions support team is available for consultation to evaluate multiple control scenarios to identify the ideal lighting control device or system to meet energy code requirement and customer criteria. Additionally, our team of friendly and experienced professionals is enabled to assist on-site personnel, such as installation contractors, 3rd party integrators, certified field technicians and facilities personnel, to quickly resolve issues and provide additional support.

Technical Service Center:
(800) 888-8006



Design Service

Our team of lighting control system design professionals are available to provide sensor layouts, networked system design services and 3rd party integration support for new and retrofit projects. Our goal is to provide you with on-time and accurate delivery of design deliverables optimized for your specific application, compliant with local building codes and project specifications.

On-site Support

Hubbell Control Solutions offers on-site support service to ensure your project goes smoothly. While Hubbell Control Solutions products are designed with simplicity in mind, some projects may benefit from a Certified Field Technician (CFT) to perform an on-site pre-installation walk-through, after-hours and remote startup assistance, occupant training, sensor tuning, preset programming and other pre/post-occupancy services.





ALERA LIGHTING

ARCHITECTURAL AREA LIGHTING

BEACON PRODUCTS

COLUMBIA LIGHTING

COMPASS

DUAL-LITE

HUBBELL CONTROL SOLUTIONS

HUBBELL INDUSTRIAL LIGHTING

HUBBELL OUTDOOR LIGHTING

KIM LIGHTING

KURT VERSEN

LITECONTROL

PRESCOLITE

WHITEWAY

HUBBELL®
Control Solutions

701 Millennium Blvd. Greenville, SC 29607
Tel 864.678.1000
www.hubbellighting.com

HCS-1003 04/18

Copyright © 2018 Hubbell Lighting, Inc. All rights reserved. Please refer to online specifications for most up-to-date content as specifications are subject to change without notice.